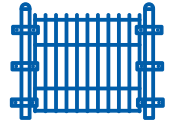


ACCESSORIES FOR FENCING PANELS

Reliability and durability in good style



Plastic intermediate
clamp



Plastic bracket
for foundation

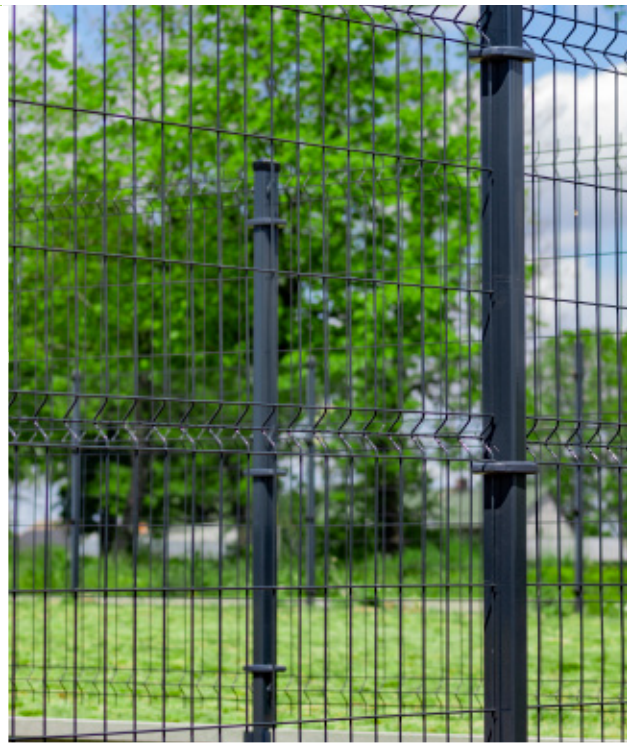


Legally
protected
designs



Harmonious form

Timeless elegance and perfect fit of elements.



Universal, minimalist style

Identical fence surface
without protruding elements
which disturb the fencing
appearance.



Engineering masterwork

Quick and smooth assembly.

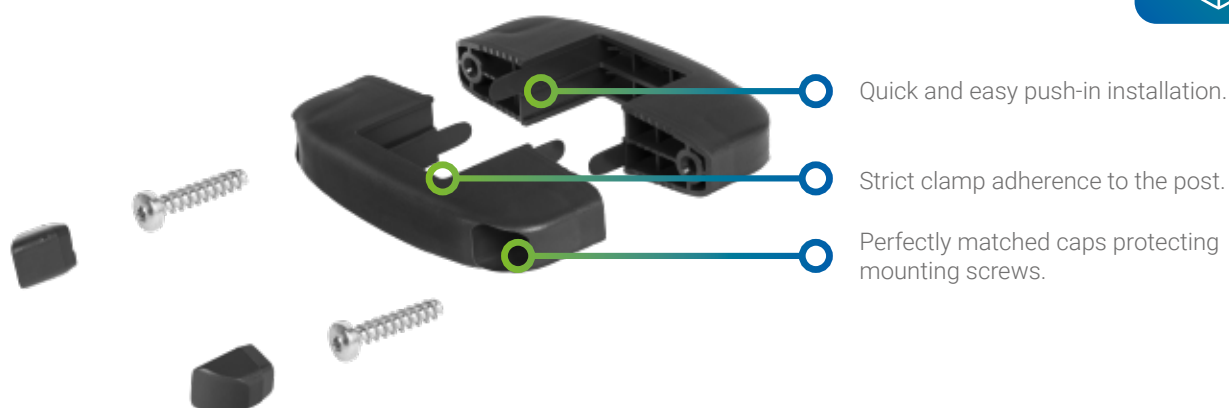


Representatively and
coherently

Perfect RAL colour fit to the fence post.



Plastic intermediate clamp



Properties:

very strong connection of panels 3D ø 3, 4, 5 and 2D type 6/5/6 with the fence post 40 x 60 mm

the same distances are maintained between fence posts during assembly

exceptional fencing stability

the press of panels against posts eliminates noise, caused e.g. by vibrations generated by wind or ball impact

simple and quick assembly

exceptional resistance to weather conditions (UV radiation, frost resistance)

Intended purpose:

modern residential housing

single-family houses

industrial plants

office complexes

public utilities (hospitals, schools),

other industrial and business spaces

Material and colours:

Material	Colours
 Polyamid (PA)	RAL 9005
	RAL 7016
	RAL 7040
	RAL 6005
	RAL 8028

Available variants:

Plastic intermediate clamp
TYPE: OPT40x60/ZAS/W/COLOUR

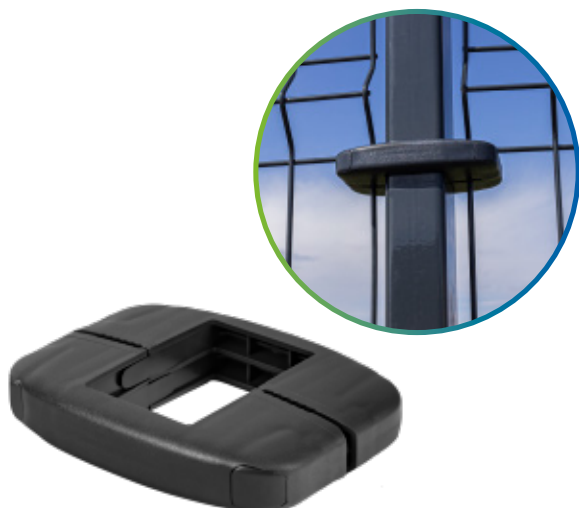
ART.NO.	Caps (2 pcs.)	Metal screws for plastic (2 pcs.) 6,1 x 30 TX25	Clamp
3580		 Torx TX25	

SCAN AND WATCH
panel fence
installation

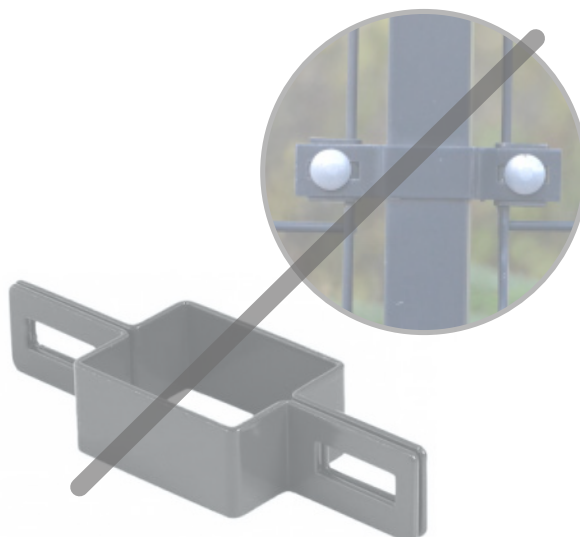


Plastic intermediate clamp advantages

Plastic intermediate clamp



Metal hot-dip galvanized intermediate clamp



Design advantages:

Metal clamp equivalent. The same distances are maintained between fence posts as during assembly of metal intermediate clamp.

Immediate assembly. Openings inside the clamp allow its quick fixing by means of screws intended for plastics. This kind of fixing does not require using problematic spacers, so-called booklets. The fixing is easy to be modified also after final assembly.

No corrosion centre. The plastic intermediate clamp is without doubt a product with better technical values. Compared to the metal clamp the screws are set in the mounting holes and additionally protected by caps. The advantage of such a solution is that there is no corrosion.

Safety. Rounded structure protects against accidental cut.

Timeless and original design. The appearance of the clamp is consistent with the fence post and plastic bracket for concrete slab.

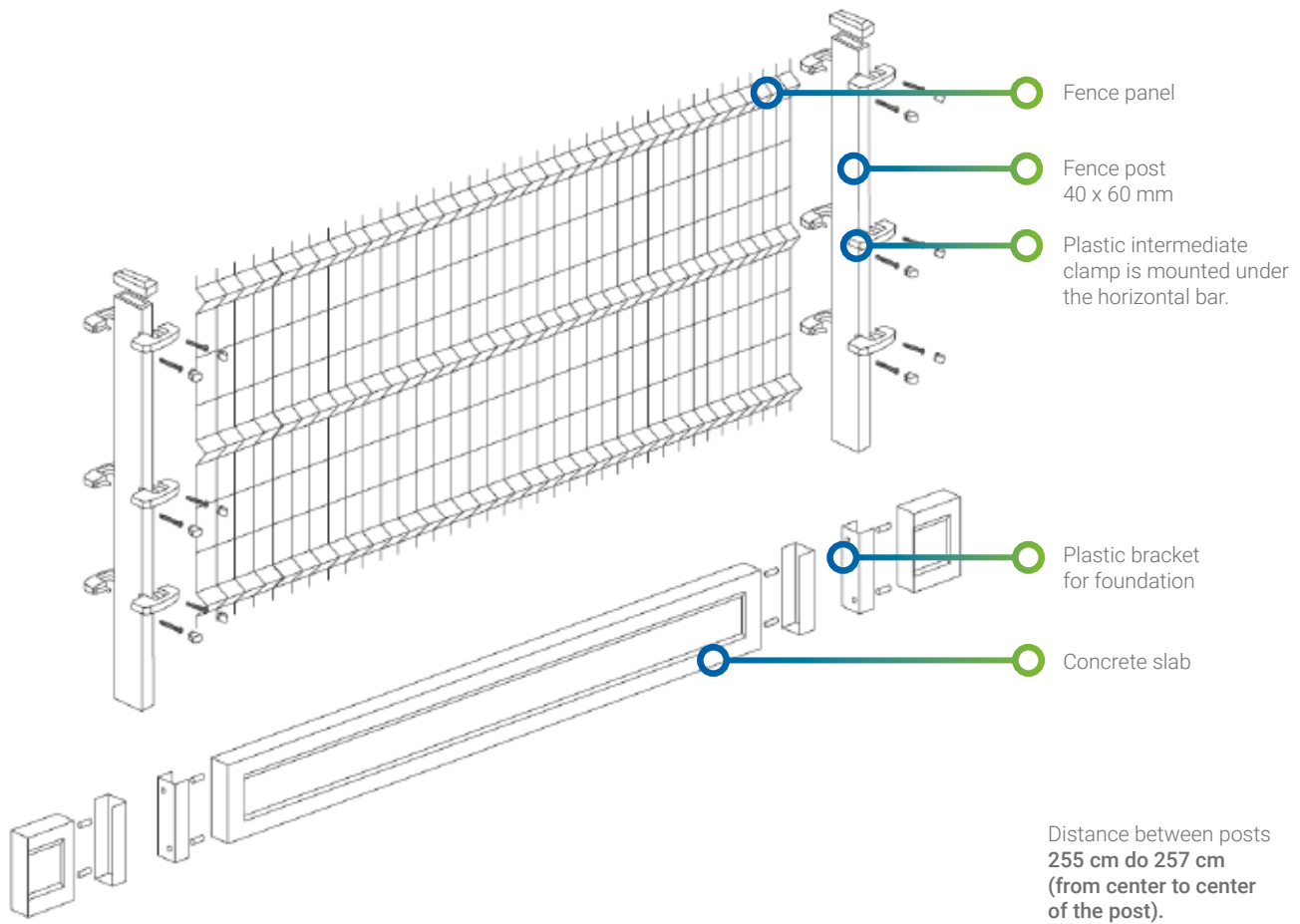
Problem-free delivery. No scratches during transport and low product weight allow the reduction of forwarding costs.

Material advantages:

Exceptional resistance to weather conditions and mechanical damage.

The plastic clamp is made of high quality technical plastic - polyamid (PA), containing UV stabiliser. This kind of plastic guarantees lasting protection against adverse weather conditions. This material features high resistance to impacts in low and high temperatures. The plastic has also a high ability to absorb vibrations, good dimensional stability and high resistance to environmental corrosion and penetration of chemicals.

Assembly diagram



INSTALLATION INSTRUCTIONS FOR 3D FENCE Ø3, Ø4, Ø5 AND 2D 6/5/6 USING INTERMEDIATE PLASTIC CLAMPS



Plastic intermediate clamps should be placed under horizontal bar of fencing panel, and the lower clamp should be placed above horizontal bar. Thus the panel is set stable on clamps. For heights above 1.5m it is recommended to mount 3 sets of clamps.

Mount fencing panel between intermediate posts using plastic intermediate clamp and screws 6,1x30 TX25.

Put front part of the clamp Ø6 mm and rear part of the clamp Ø3 mm so they embrace the whole post together with the panel. Using drill driver with bit TX25 carefully screw one side and then the other. When both parts are matched properly, screw to achieve contact until resistance is felt.

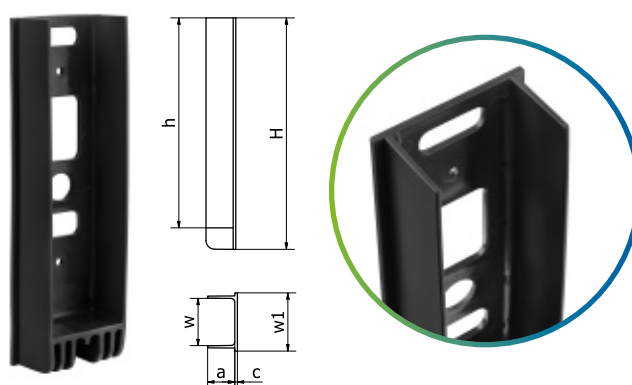
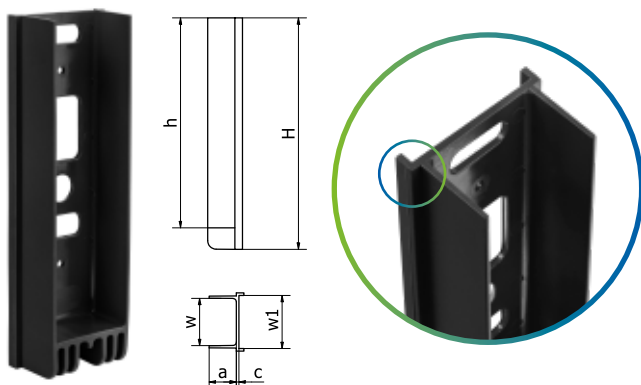
Note: electric drill driver should be fitted with torque clutch so a torque of 8-12 Nm can be achieved.

Plastic bracket for foundation



Standard version: **MPT**

Corner version: **MPT/N**



ART.NO	TYPE	h [mm]	w [mm]	w1 [mm]	a [mm]	c [mm]	H [mm]
3576	MPT42x200x35	195	44	61	34	3	215
4006	MPT50x200x30	195	52	61	31	3	215
3493	MPT50x250x30	245	52	61	31	3	265
4007	MPT57x200x33	195	59	61	33	3	215
4008	MPT57x300x33	295	59	61	33	3	315

ART.NO	TYPE	h [mm]	w [mm]	w1 [mm]	a [mm]	c [mm]	H [mm]
3577	MPT/N42x200x35	195	44	49	34	3	215
4009	MPT/N50x200x30	195	52	58,5	31	3	215
3569	MPT/N50x250x30	245	52	58,5	31	3	265
4010	MPT/N57x200x33	195	59	67	33	3	215
4011	MPT/N 57x300x33	295	59	67	33	3	315

Properties:

resistance to mechanical damage,
high resistance to weather conditions (UV radiation, frost resistance)
simple and quick assembly
consistent appearance of plastic bracket with plastic clamp
economic values
no scratches during transport and assembly,
no corrosion centres

Main advantages:

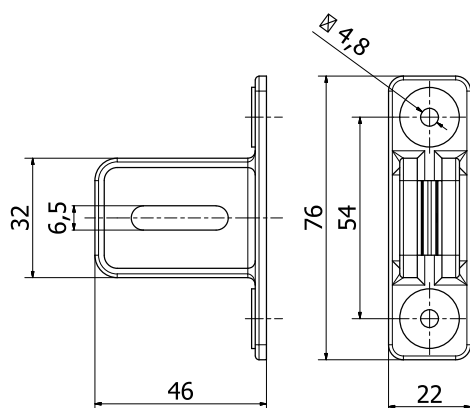
durability and corrosion resistance compared to metal counterparts
innovative design allows for quick leveling of the mounting relative to the fence post
stable support for the concrete slab
designed for concrete foundations of various widths

Material and colours:

Material	Colours			
 Polyethylene	RAL 9005		RAL 6005	
	RAL 7016		RAL 8028	
	RAL 7040		RAL 7038 CONCRETE	



Plastic universal grip



ART.NO	TYPE
3557	UUT

Properties:

high resistance to weather conditions (UV radiation, frost resistance)

simple and quick installation







consistent appearance of universal grip with plastic clamp and fencing post

economic values

no scratches during transportation and installation

no corrosion centres

Material and colours:

Mateial	Colours	
 Polyamid	RAL 9005 	RAL 8028 
	RAL 7040 	RAL 7016 
	RAL 6005 	

Installation set

The product includes complete set of bolts, washers and installation screws.

Trouble-free installation

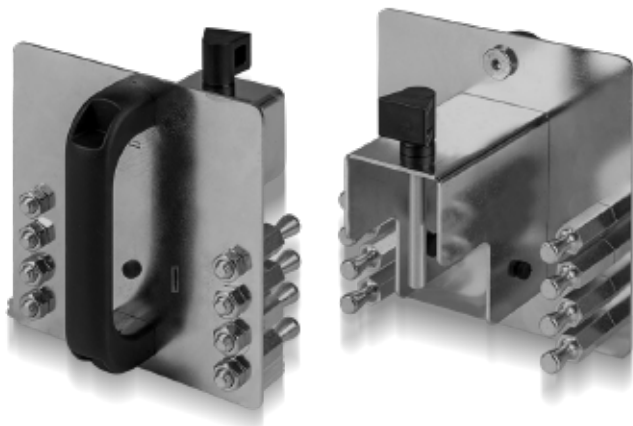
Fixing a fence panel with a wire diameter of Ø4, Ø5 without using a panel clamp spacer, the so-called booklet.



Grip mounted on
initial post, end post
and corner post.



Holder for centering the fence panels on the post during installation



NEW

ART.NO	TYPE
4619	UCP 40x60

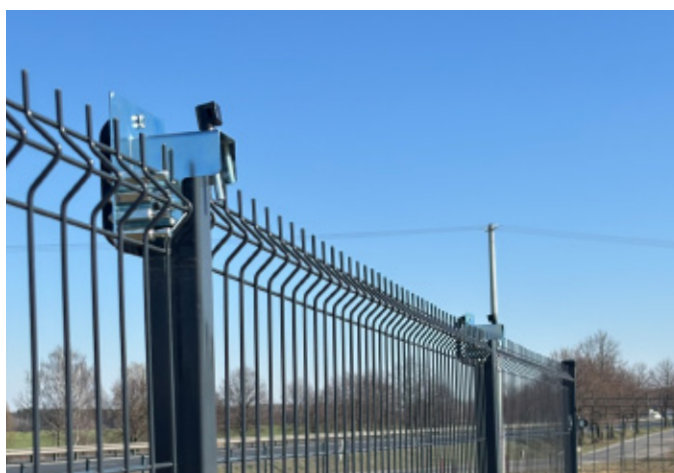
Properties:

Perfect for use in various fencing systems with 60 x 40 mm posts, without the need to remove the top caps.

The holder allows panels to be hung at various heights, making it possible to step the height difference between the left and right side of the post.

The main function of the holder is to maintain the correct distance between the fence panels and the clamps, ensuring a straight and stable fence structure while tightening the clamps.

Provides quick and precise alignment of fence panels on posts during DIY installation



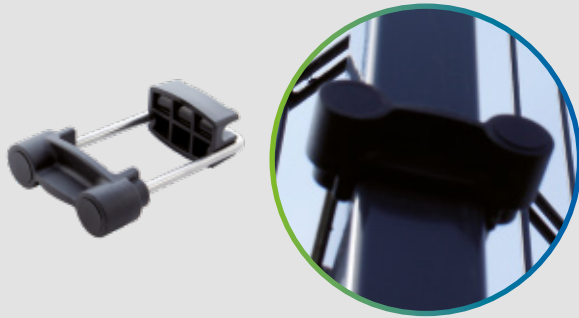
Trouble-free installation

anel fence installation can be done by just one person.

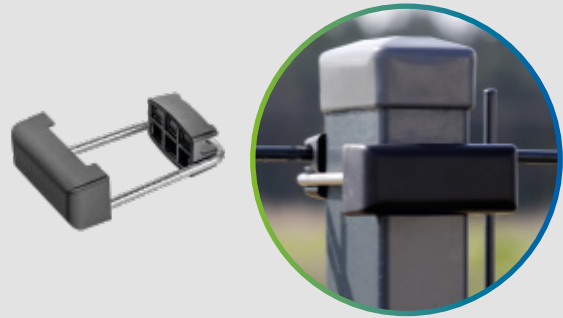


Other accessories for installation of fence panels included in the offer

Clamp connector



Metal clamp connector



Mounting bracket with steel tightening pad-plate



Standard



Corner



Mounting bracket with plastic tightening pad-plate



Standard



Corner



We carry out individual orders at the client's request. We offer a full range of tooling and injection services, from design, tooling production to production implementation. We produce articles for the industrial, fencing and furniture sectors. The goods are characterized by high quality of workmanship. We ensure continuity of supply and quick order fulfillment.

If you are interested, we are at your disposal.

Please send your inquiries to the following e-mail address: order@tulplast.pl

or call: + 48 61 815-70-16.

Get to know Tulplast's top product categories

Plugs



Masking caps



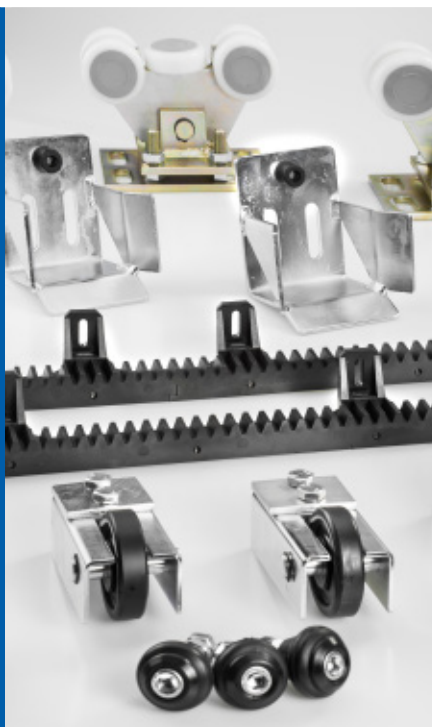
Hand knobs, inserts, handles



Accessories for furniture



Gate accessories



Tulplast Socha sp. k.
ul. Wiosenna 27,
62-021 Paczkowo, Polska
tel.: +48 61 815 70 16
tel. kom.: +48 696 172 856
e-mail: order@tulplast.pl



SCAN AND SEE

Other accessories for panel fence installation